



1. Overview

KEY TOOL MAX PRO is a professional smart device with multi-function, Bluetooth and WIFI communication interface are intergraded inside, which is convenient for connecting and controlling Xhorse Key Cutting Machine.

Supports various OBD functions such as Vehicle diagnosis, Immo programming, Throttle program, TPMS, and Maintenance light reset.



2. Main Functions

- Immo Programming
- Vehicle Maintenance
- Remote Leakage Detection
- Remote battery Voltage Detection
- Generate Remote and Smart key
- Program and Clone IMMO Transponder
- Generate Special Transponder
- Renew Remote
- Recognize and Clone Accesscard
- Generate and Clone Garage Remote
- Frequency Detection and Clone Remote
- Connect to Xhorse Key Cutting Machine

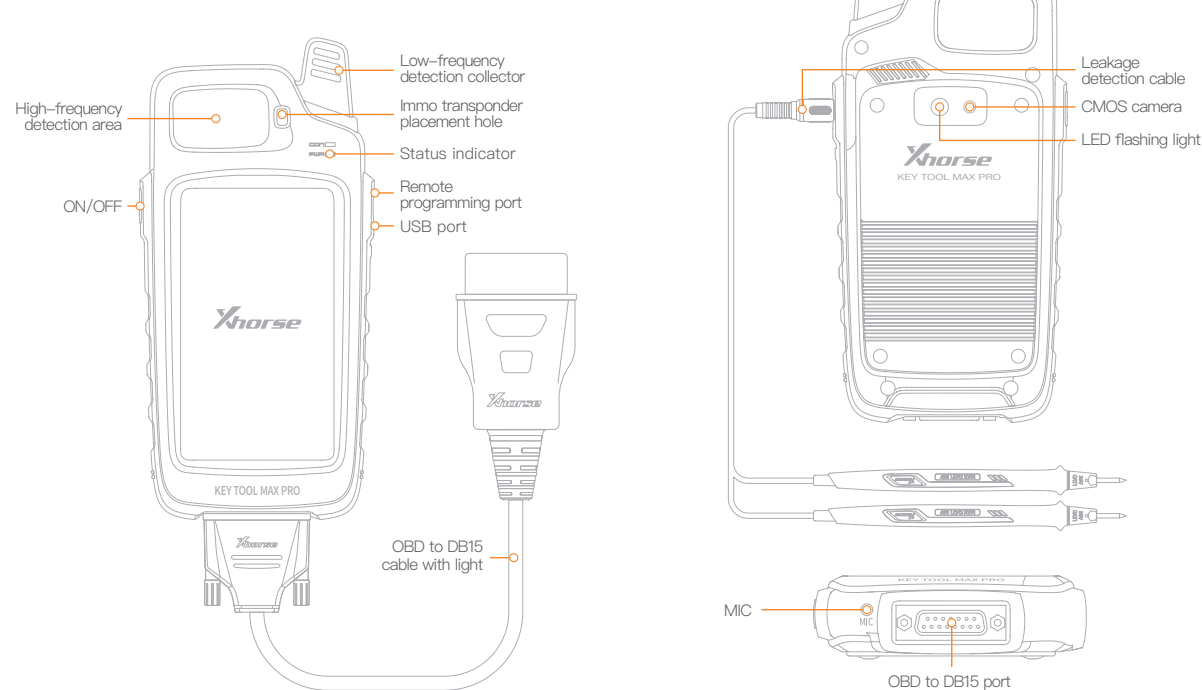
3. Performance

- Battery capacity: 3375mAh
- Battery life: >6Hours
- Stand time: >5Days
- Recharging current: 1.5A
- Brightness: >400nits
- Screen resolution: 1280*720P
- Camera resolution: 800W
- WiFi & Bluetooth: 802.11a/b/g/n/ac & 4.2 BLE

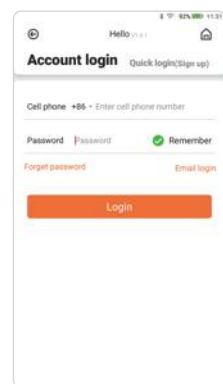
4. Packing List

Item	Quantity
KEY TOOL MAX PRO device	1
OBD to DB15 cable with light	1
Remote programming cable	1
Leakage detection cable	1
USB cable	1
User Manual	1

5. Appearance

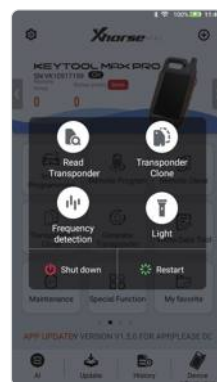


6. Setting



6.1 First Time to use

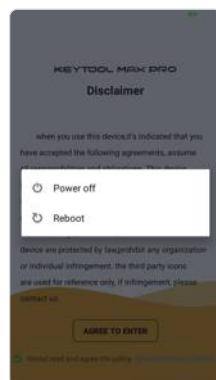
For the first time to turn on the KEY TOOL MAX PRO, you need to select language, region (System default setting is China Standard Time Zone), connect to WIFI, login with a registered account, if you don't have an account, please register as the picture on the left.



② After entering the system, press and hold the On/off button for a while, the interface displays the following icons, click to shut down Option, the device will shut down.

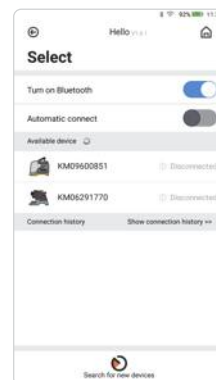
6.2 Power Off

① Before entering the system, press and hold the On/off button for a while, 'power off' and 'restart' will be shown on the screen, click on 'power off', device will shut down.



6.3 Connect to Key Cutting Machine

KEY TOOL MAX PRO can connect the Key Cutting Machine by using Bluetooth to operate: click on the interface [Select], the interface displays the current connectable device, select the device to be connected according to the serial number.



6.4 Indicator status

- ① When the device is turned on or charging, the POW indicator light is on.
- ② When the device is working, the CON indicator is on.

6.5 Device reset

- ① Press the On/Off button for 12 seconds, the device will restart automatically.
- ② Press the On/Off button about 1-2 seconds, the screen displays shutdown and restart options, select the corresponding option to shut down or restart the device.

7. Maintenance

- Do not hit it violently, shake or throw it.
- Do not wash main body and other parts with water or other liquid directly, and do not clean KEY TOOL MAX PRO with wet cloth.
- Do not place KEY TOOL MAX PRO on high temperature, high humidity or dusty places.
- Do not take KEY TOOL MAX PRO apart or retrofit it in private otherwise mainboard will be damaged or battery will on fire and etc.
- Please keep screen, camera and other key parts well and prevent sharp objects to do damage to them.
- The leakage detection and voltage detection functions are limited to the leakage detection and voltage detection of the remote, please do not use it for the detection of other products. All functions should be used strictly in accordance with the scope of use of the device, as exceeding the scope will damage the device.

8. Warranty And After-Sale Instructions

KEY TOOL MAX PRO has one year warranty, and it is based on the date on the transaction voucher; If do not have transaction voucher or lost it, the factory date recorded by the manufacturer will prevail.

※ Situations on the below can not get free repairment

- Damage caused by not following the use instructions.
- Damage caused by repairing or retrofitting in private.
- Damage caused by fall, crash or inappropriate voltage.
- Damage caused by inevitable force.
- Damage caused by using in harsh environment or on the

vehicle and ship for a long time; Get main body dirty and worn due to use.

Please get in contact with dealer or scan the QR code behind the instruction, download Xhorse official APP to get after-sale and technical support.

Xhorse reserves all rights to this manual. Without permission, it is forbidden for any individual or organization to use any form of reproduction and dissemination of any part of this manual. Due to product improvements, the contents of this manual may be changed without notice.



Xhorse APP

Xhorse |

DOWNLOADABLE FROM GOOGLE PLAY STORE AND APP STORE.

